

Impossible Photoshop

For this assignment you are going to create **3 impossible images**. Use the tools in Adobe Photoshop to combine pieces and parts of unlikely objects.

You can create impossible objects set in impossible environments.

Begin by researching what other artists have done. Do not copy their work, but be inspired to create your own ideas.

Part 1 - Delete the background

Step 1: Open Adobe Photoshop File > New

Make your document 8" (inches) x 10" (inches) - Resolution 150

Step 2: Use the internet to find a images to create a composition with unlikely connections.

Step 3: Once you have found your pictures Right click and "Save images as" onto your desktop.

Step 4: Go to your Photoshop document, File > Place Embedded or drag the image from the desktop into your document.

Step 5: Make sure your LAYER palette is open. If not go to Window > Layers.

Step 6: You may need to RASTERIZE your smart object, go to Layer > Rasterize > Smart object or right click on the layer and RASTERIZE LAYER.

TIP: IF you go to your layer option at the top of your screen and the Rasterize option is not available, then your image has already been rasterized. If so SKIP THIS STEP.

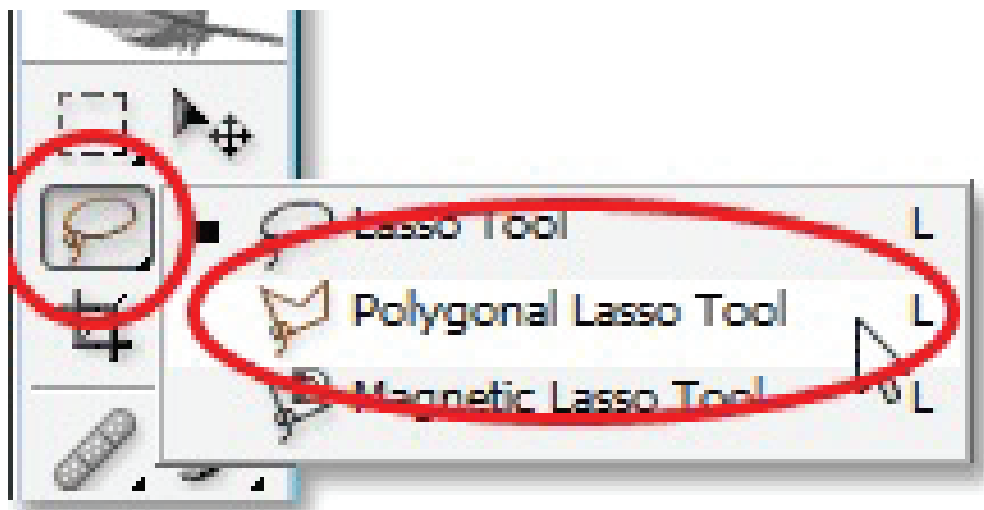
Step 7: Scale the image.

Step 8: Click on the layer, Rename it so you know what is on that layer.

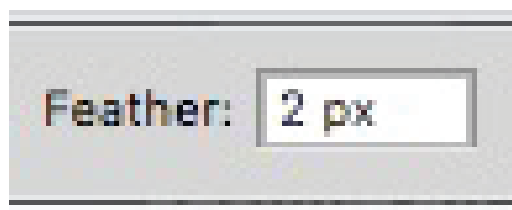
Step 9: On the tool bar click and hold on the LASSO TOOL. This will open up two other selection options.

Select the **POLYGONAL LASSO TOOL**.

This tool drops an anchor point every time you click.



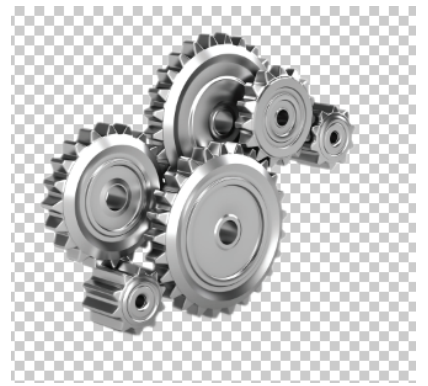
Step 10: At the top of your screen set the Feather option to **2 pixels**.



Step 11: Follow around the outside of your image to select the background.

Delete the background.

TIP - You may want to work by selecting small chunks and deleting as you go. Sometimes you may accidentally double click and your selections will close.



Step 12: Repeat these first 11 steps to collect a minimum of three images that you are going to be using to create an impossible image.

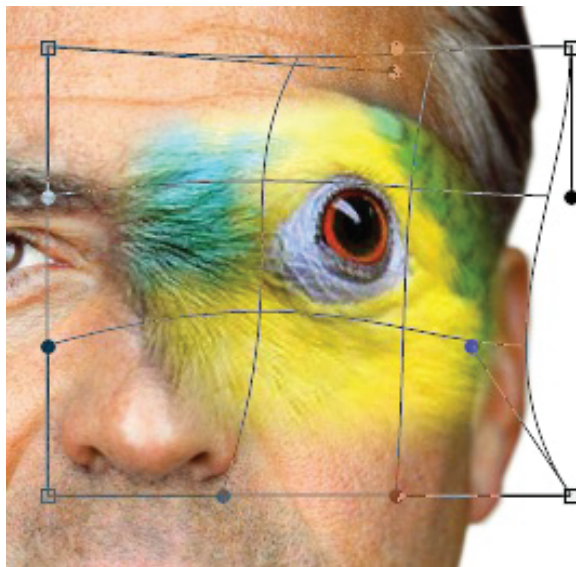


Part 2 - Combining the pieces

EDIT > TRANSFORM > WARP

Move the points around to warp the image.

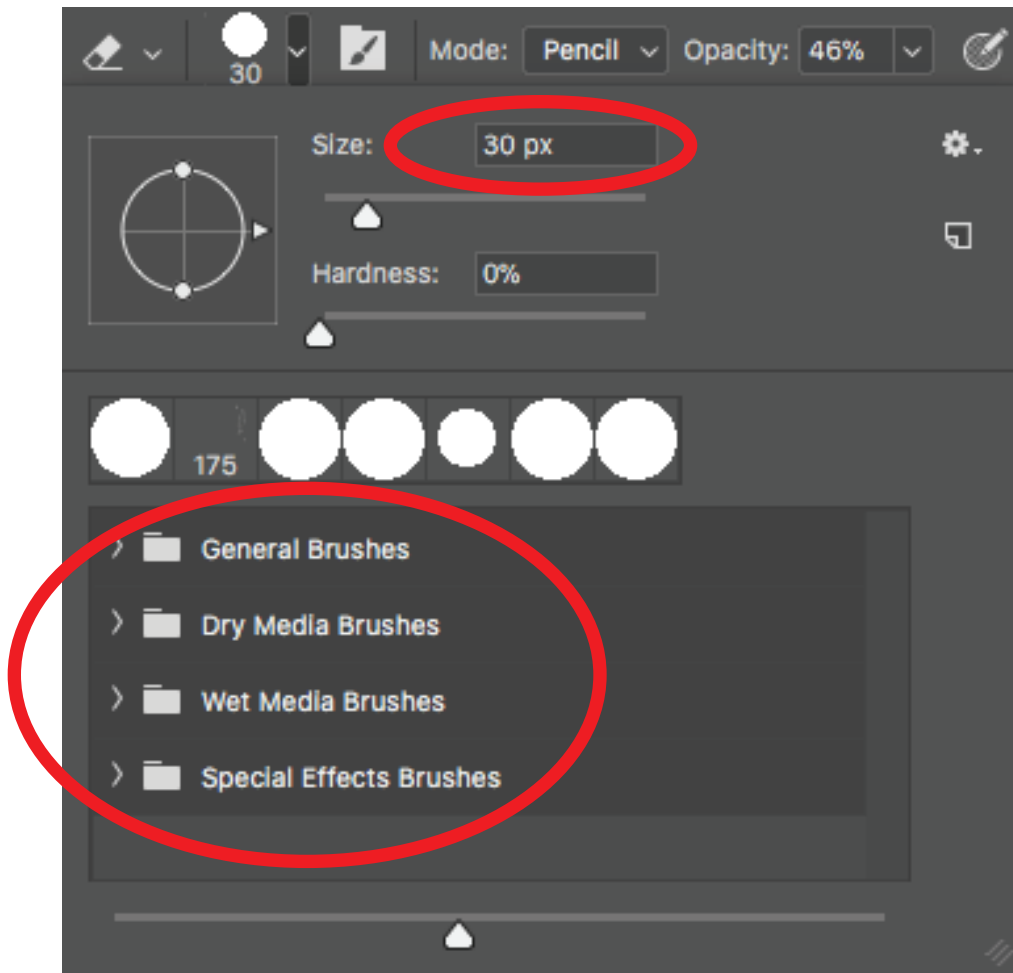
When you are done moving the points press the enter key to release the tool.



Combining the pieces - Cont.

Use the ERASER TOOL to clean up edges and make the elements fit more naturally.

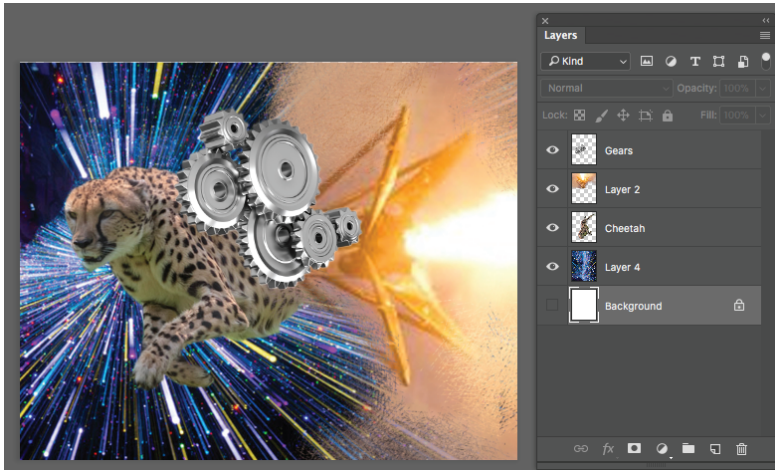
At the top left screen - Double click on the eraser tool.



Press Enter once you have set your numbers.

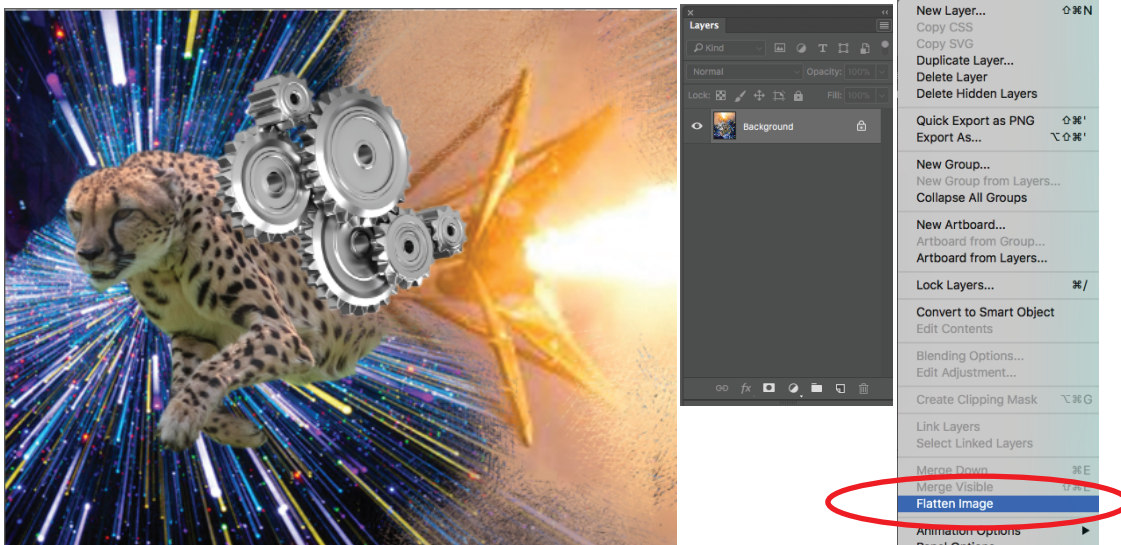
Layers separated

You can add filters, adjustments, Fx etc. to individual layer



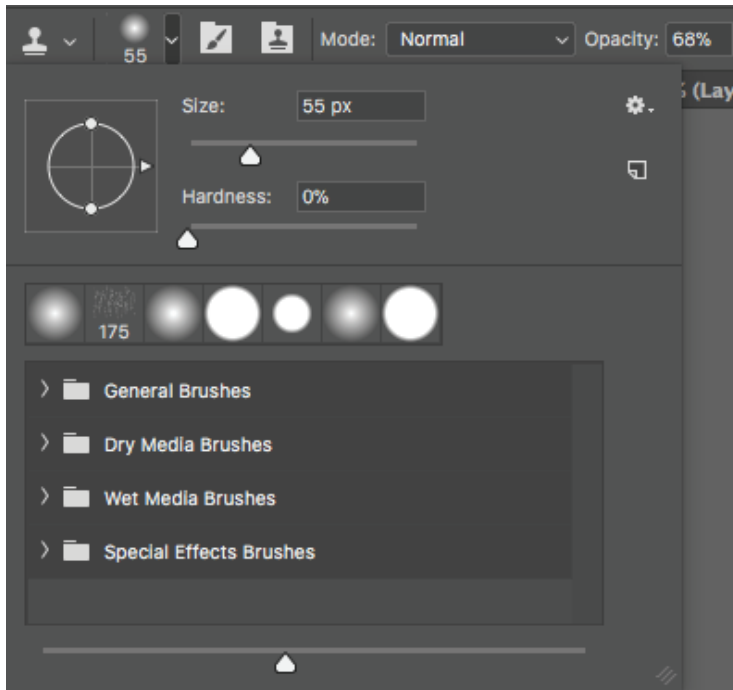
Layers Flattened

At the end of your project you can flatten layers and use the clone tool to continue blending images together.

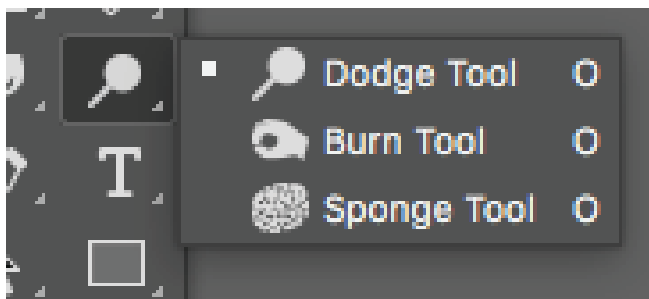


Clone tool -

Click on the clone tool - Hold down the ALT key and click on the part of the image that you want to clone. Let the Alt key up move the clone tool to a different spot and click and hold to copy the image.



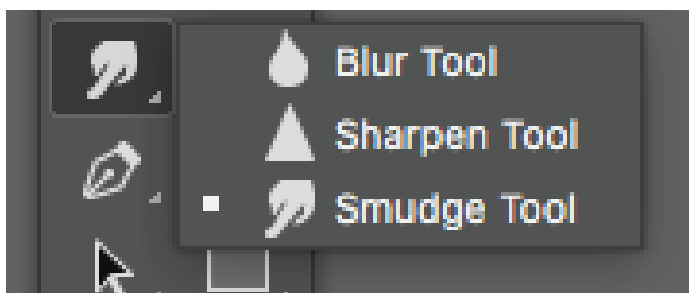
Use the sliders and menus at the top of the screen to adjust your clone effects.



Other tools that can help blend your image together

Dodge Tool - Make an area lighter.

Burn Tool - Makes an area darker.



Grading Rubric

Create 3 separate impossible images.

1 pt.	3 pts.	5 pts.
The project does not have pieces that are combined.	The project has evidence that the artist used only two separate sources to create their image.	The project has evidence that the artist used at least three separate sources to create their image.
The pieces are poorly selected and sloppy. There are unwanted pieces of the background still attached.	The project has evidence that the artist was able to select and delete the background. The selected edge has a no feathered edge.	The project has evidence that the artist was able to select and delete the background. The selected edge has a light feathered edge .
1 pt.	5 pts.	10 pts.
The pieces don't fit together.	The project has evidence that minimal uses a of the erasing, cloning, dodging, burning, warping etc. to blend and fit the pieces of the composition together.	The project has evidence that the artist used a variety of erasing, cloning, dodging, burning, warping etc. to blend and fit the pieces of the composition together.
1 pt.	3 pts.	5 pts.
The project shows little effort.	The student used their first idea. The student worked just to be finished and did little to developed their Photoshop skills. The student 70% the time available to create their best project. The project shows some of effort.	The student was creative with their ideas. The student pushed their ideas and tried new things that developed their Photoshop skills. The student used all the time available to create their best project. The project shows a lot of effort.