

Large Stencil

For the large stencil assignment you will combine the skills you learned in the High Contrast Portrait and The Letter Stencil.

The skill from the High Contrast Portrait is the to simplify and create an on/off, black/white image.

The skill from the Letter Stencil you will apply to this assignment is, using bridges to support negative spaces, support weak areas and place “beautiful” bridges.

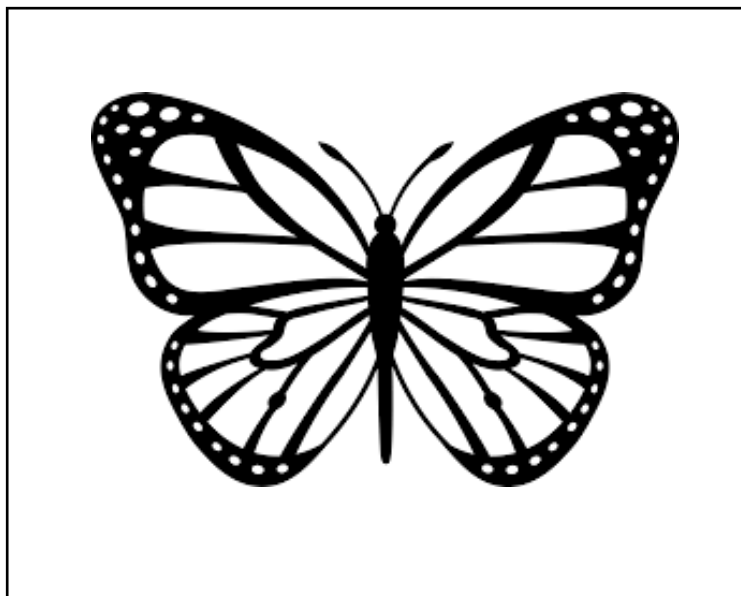
Step 1 - Find an object of what you are going to use for your large stencil. Search for a **LINE ART** version of what you want. For example, search BUTTERFLY LINE ART, or DRAGON LINE ART, etc.

Look for images that are interesting, but not too difficult, or too simple.

Step 2 - Open Photoshop

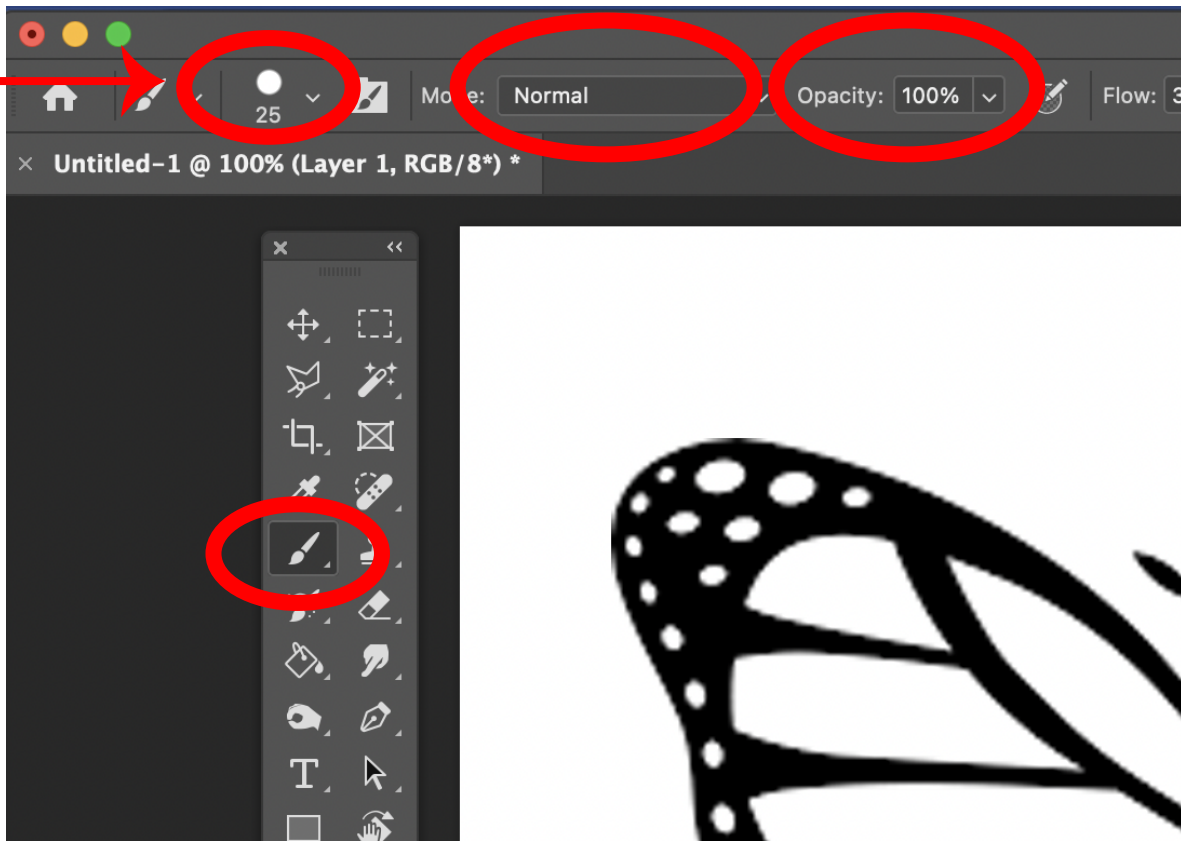
File new > 10” x 8” 150 ppi (for wide images), or 8” x 10” 150 ppi (for tall images.)

Edit > Paste your image and scale it so it fits in the document.



Large Stencil

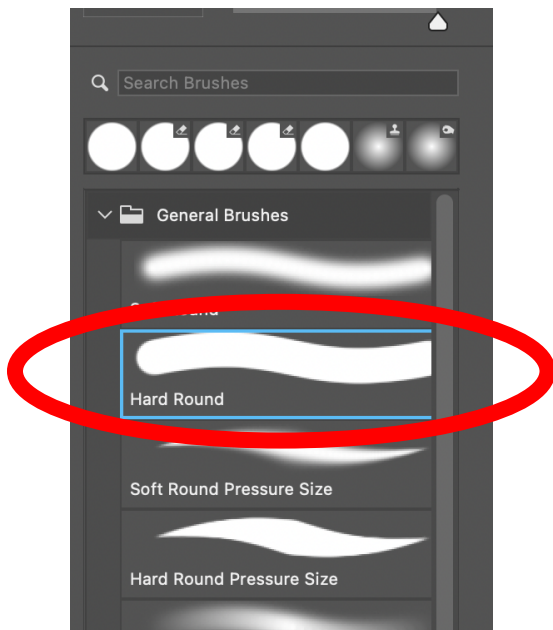
Step 3 - Set up your brush. The size should be somewhere between 20 and 30.



No blurred edge brush.

If your brush has a blurred edge.

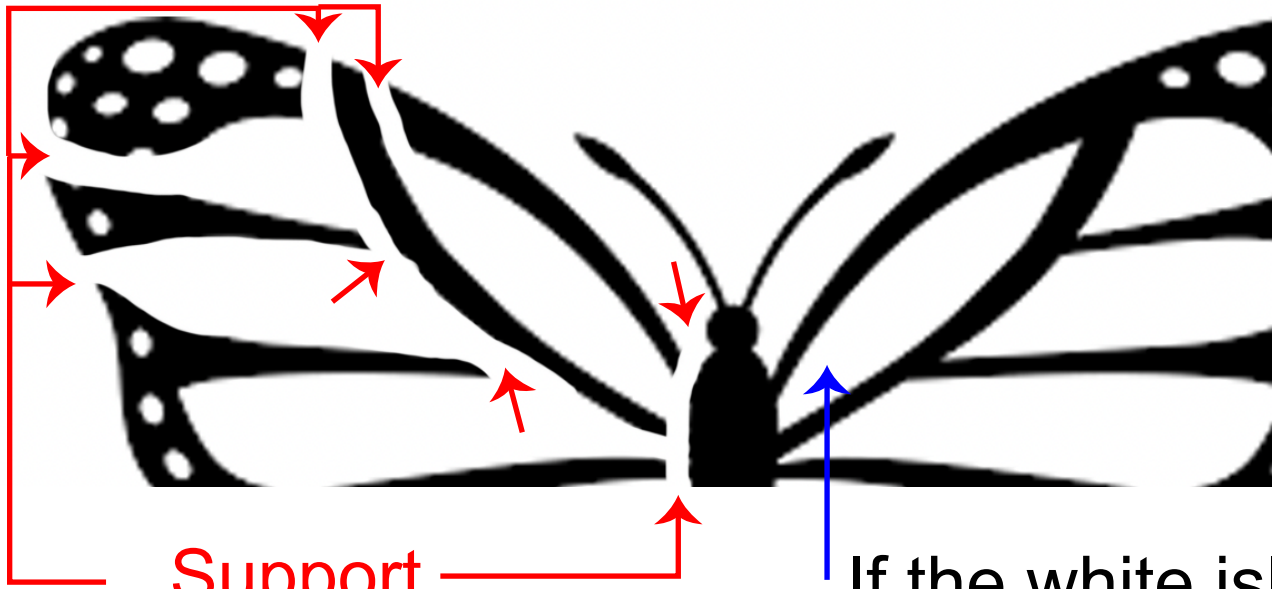
Click on the brush > General Brushes > Hard edge



Large Stencil

Bridges are used for two reasons...

1. Support.
2. Break apart long open black areas.



If the white island has no support it will fall out when you cut out the black.

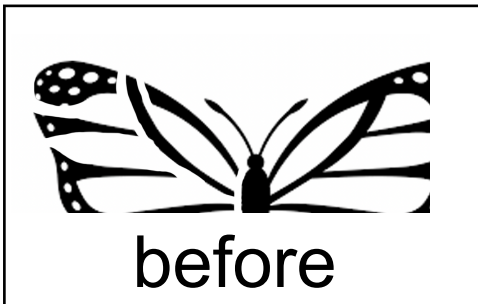
WHITE = PAPER

BLACK = OPEN / PAINT

Large Stencil

Use the black brush to simplify things that you don't want to cut.

For example, I removed the dots.



Let the instructor check your stencil before you print, trace and cut.

Before



After



All the white shapes have been supported
The black areas have been simplified.