

Stencil Letters

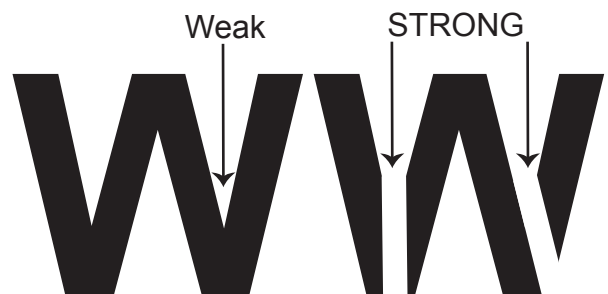
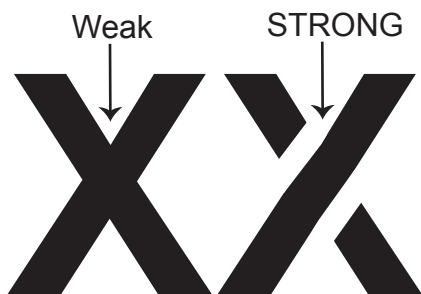
For this assignment you will begin to learn the basics of how to create a stencil, how to place bridges, and how to cut the stencil pieces as complete shapes. This assignment is meant to be an introduction to the Larger Stencil project.

Before we can cut more complicated stencils we must understand the basics of what makes a strong useable stencil.

Basic Stencil vocabulary -

1. Shapes - A closed area of space. The black shapes will be cut out and open to receive paint.

2. Bridge - A thin strip of material that breaks apart larger shapes. Or, a bridge can be used to hold in material to protect negative spaces, such as the center of an O shape.



Stencil Letters

For this assignment you will be using Adobe Photoshop to design a stencil of a word that has between 3-5 letters.

- (a) Add bridges to support negative space that would fall out if there were no bridges to hold in the space. Use bridges to support weak points or other thin areas.
 - (b) Have the instructor check your bridges before sending your file to be printed.
 - (c) Attach the print to a heavy weight piece of card stock. Use the graphite paper to trace your shapes.
 - (d) Use an X-acto razor blade to cut out the shapes.
 - (e) Use a dry brush stencil painting technique to paint your letters 4 times.
-

Step 1: Open a new document in Photoshop.

The document should be in landscape (wider than it is tall) and measure 10" x 8" resolution 150 ppi

Step 2: Use the type tool in Adobe Photoshop to type a 3-5 letter word.

Step 3: Press CNTRL + Enter or click on the move tool to release the type tool.

Change to font to a font that you like. Don't use a font that is too complicated. Keep it rather simple right now.

Recommended Font to use - **Arial**

Step 4: With the move tool scale your type so it fills most of the 10" x 8" artboard.

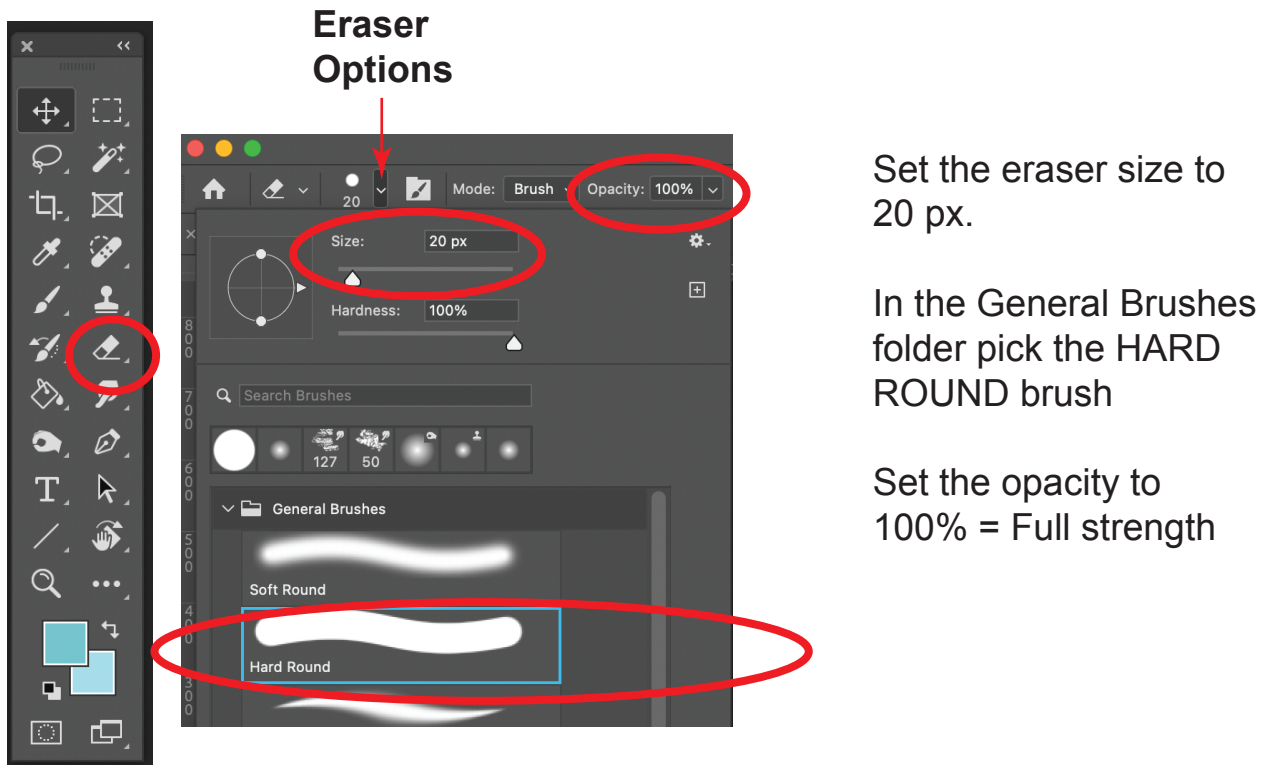
Step 5: **Open the layers palette > Control click on the type layer > Rasterize**

This will allow you to erase out the bridges for the type.

Stencil Letters

The Eraser Technique

Step 1: Select the eraser tool. Open the eraser options.



Step 2: Hold down the Shift key to make straight lines. Erase out where you want to place bridges.

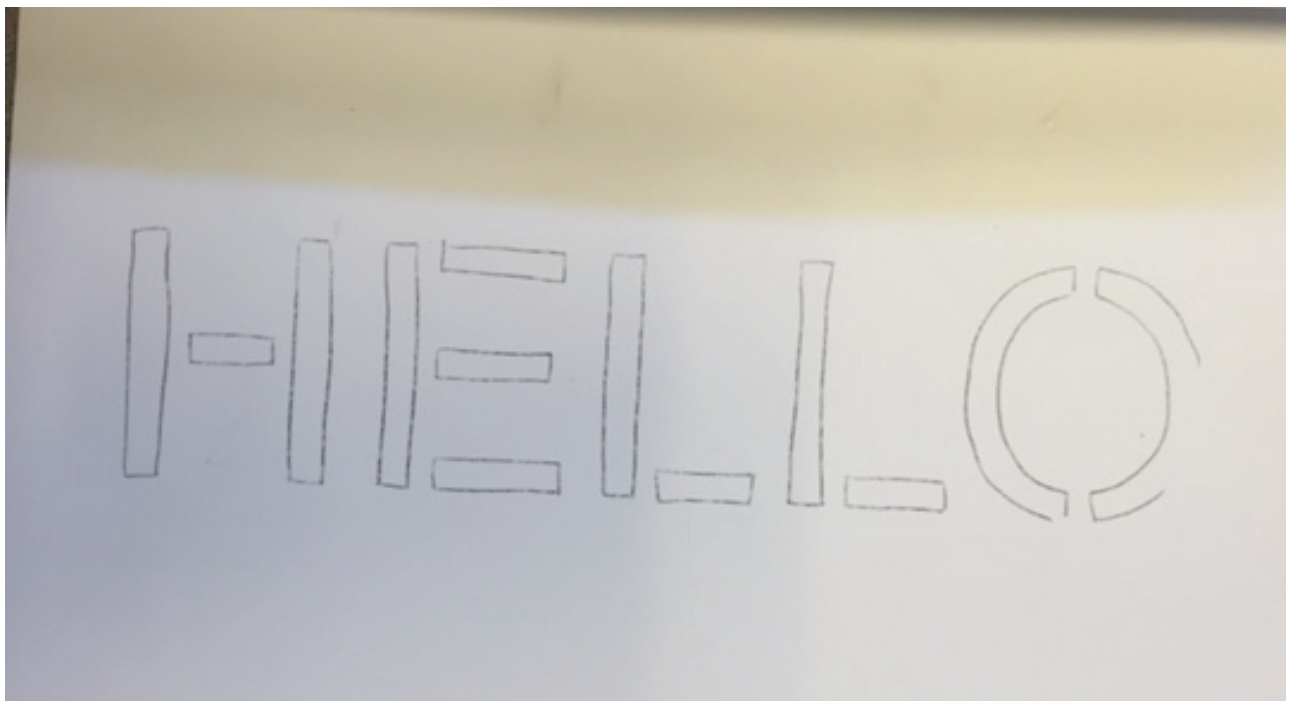
Helpful tip - Have the instructor check your design to make sure that none of your bridges are missing, or that your design has weak parts.

Step 3. Send your .psd document to be printed.

Stencil Letters

Step 4: Staple your print to a piece of heavyweight glossy card stock.

Step 5: Use a piece of graphite paper to trace your stencil design onto the heavyweight paper.



Step 6: Use an X-acto razor to cut out your shapes.

Step 7: Use paint to apply in to open areas to see what your design looks like. Repeat a minimum of 3 times to fill the whole paper with your stencil design.