

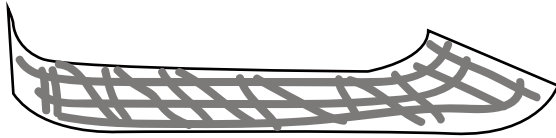
Paper Hand Sculpture

Hand Proportions

The purpose of this sculpture is to create a hand mold that can be moved and turn to help you see how a hand changes from a variety of angles.

Step 1 - Use a pencil to roll a paper straw. Allow the paper straw to unroll. Remove the pencil. The paper will remember and want to roll up.

Step 2 - Use a glue stick to apply a layer of glue allover the top of the rolled paper in a criss-cross pattern.

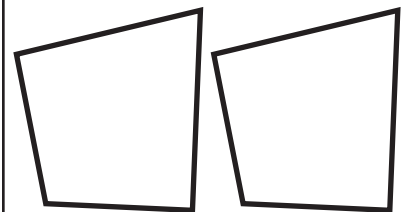
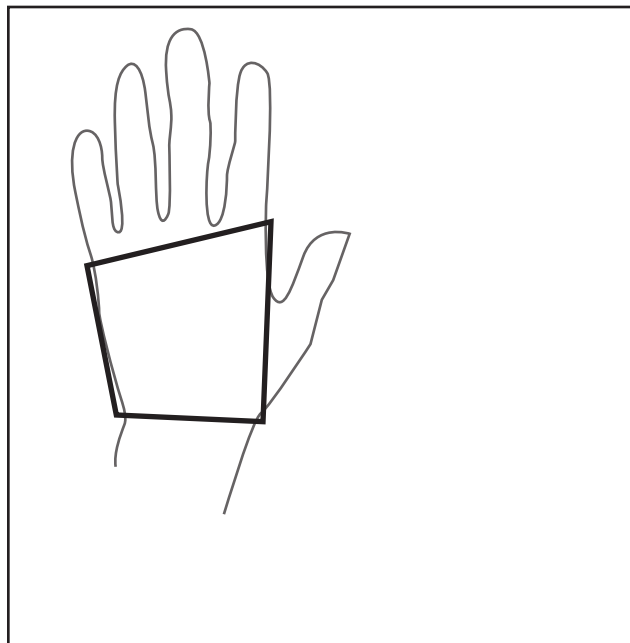


Step 3 - Roll the paper straw into a cylinder and hold to secure the glue.

Step 4 - Repeat these step to create a total of 5 paper straws that have glue inside and will hold strong throughout this project.

Creating the shapes for your palm

Step 4 - Lay your hand on a piece of cardboard. Mark the box shape that represents the squarish shape of the palm.



Cut out two of these shapes. One will be for the top of the palm and one will be for the top.

Measuring the proportions of your fingers

Step 5 - Be aware that the fingers will appear longer from the top of the hand. Looking from below (palm side) the web of skin makes the finger look shorter.

For this assignment we are going to measure the top of the hand.

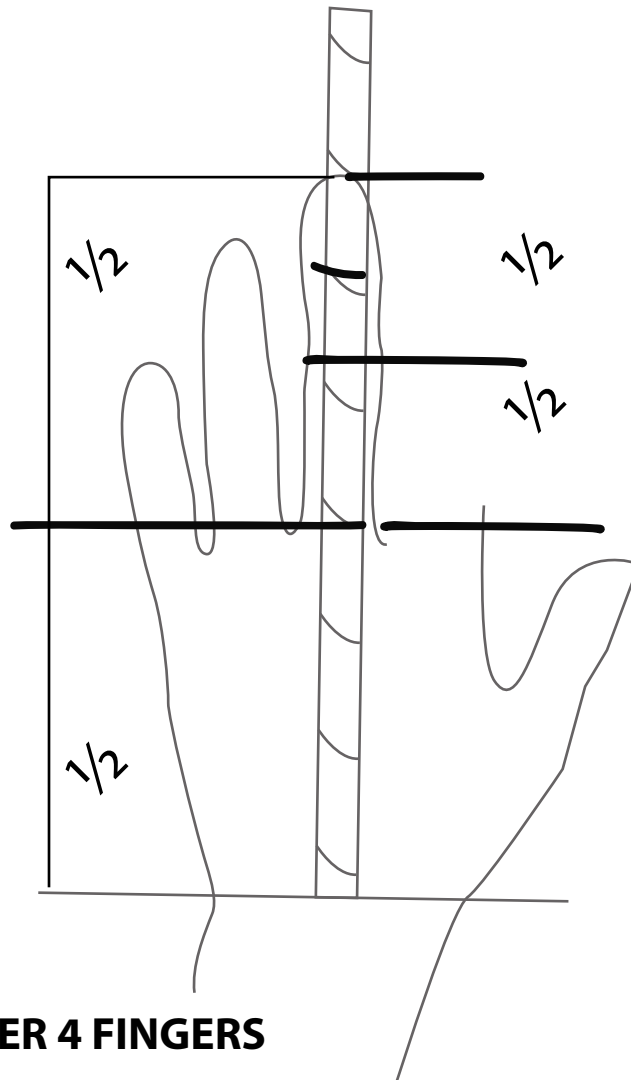
- trim both ends of your paper straws so they are flat.
- Lay the paper straw on top of your hand. Align the bottom with where the wrist starts.
- Use a pencil to mark where the first big knuckle is.
- Place another mark where the middle knuckle is.
- Place a mark where the smallest knuckle at the top would be.
- Place a mark where the end of the finger would be.

Use and X-acto knife to cut a small opening where the finger bends.

There will be three cuts
First large knuckle, Middle knuckle and top small knuckle.

Label each straw with the name of the finger. Middle, pointer, ring, pinky.

Glue the finger to the pointed rectangle shapes for the palm. Be sure to align the bottom of the straw with the base of the square.



Remember the rule of halves.

From the wrist to the first knuckle is half the distance to the tip of the finger.

The second knuckle is half way between the first knuckle and the tip of the finger.

The last knuckle is halfway between the second knuckle and the tip of the finger.

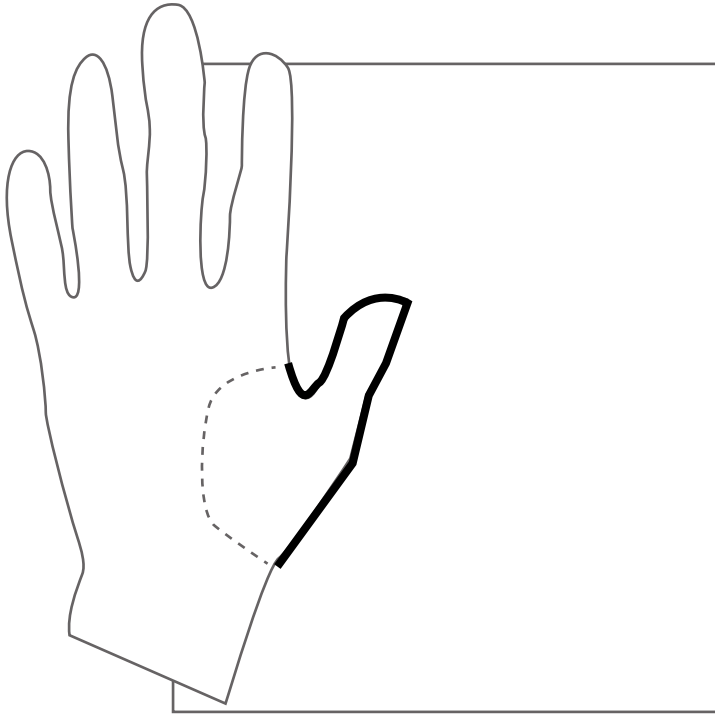
Pro Tip - The finger nail is halfway between the last knuckle and the tip of the finger.

REPEAT FOR THE OTHER 4 FINGERS

Tracing the thumb

Step 6 - Lay your hand on a piece of cardboard. Begin at the wrist and trace around the thick base on the palm, up over the thumb and finish at the web part where the thumb connects to the pointer finger.

Remove your hand and add an extra flap of cardboard that will be used to glue the thumb to the palm side of the sculpture.



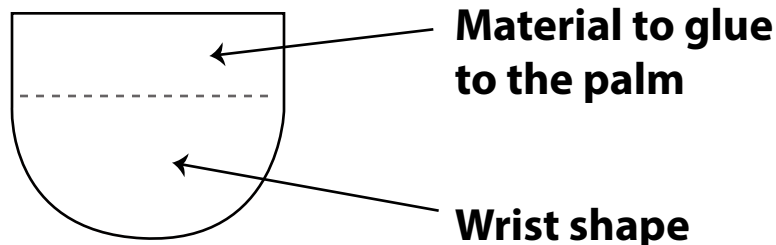
Cut out the thumb shape.

Glue the thumb in place on the bottom (palm side).

Glue the square shape you made in step 4 to the top of the hand.

The Wrist

Step 7 - Cut a half circle shape for the wrist. Leave some material at the top to glue the shape to the base of the palm shape.



Arm / Base

Step 8 - Cut a piece of cardboard 12" long, and about 2" to 3" wide. The width will depend on how big your individual hand is.



Step 9 - Glue the long strip to the half circle shape of the wrist.

Around 4" below bend the strip back to form a base to support the sculpture as it stands.

Continue folding to complete the triangle for the base.

Glue the end of the base to the top of the hand sculpture.

